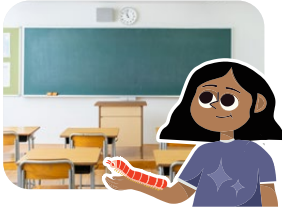


Grade 2 scope and sequence

Suggested days: **155**

UNIT 1



Working with Data and Solving Comparison Problems

16 instructional days
4 assessment days

20 days total

UNIT 2

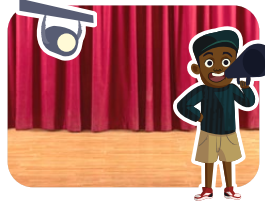


Adding and Subtracting Within 100

22 instructional days
4 assessment days

26 days total

UNIT 3



Measuring Length

15 instructional days
4 assessment days

19 days total

UNIT 4

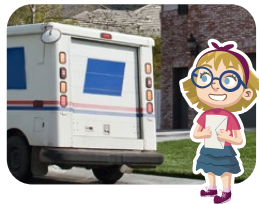


Addition and Subtraction on the Number Line

13 instructional days
3 assessment days

16 days total

UNIT 5



Numbers to 1,000

12 instructional days
3 assessment days

15 days total

UNIT 6



Geometry and Time

16 instructional days
4 assessment days

20 days total

UNIT 7



Adding and Subtracting Within 1,000

19 instructional days
4 assessment days

23 days total

UNIT 8



Equal Groups

13 instructional days
3 assessment days

16 days total