

# Comprehensive biliteracy suite

Spanish and English literacy system  
grounded in the Science of Reading



*Hello!*



*¡Hola!*



BUILT ON THE  
Science  
OF  
Reading

# Support your emergent bilinguals with a comprehensive system

As an educator, you know there are countless life-long benefits to a bilingual education. Biliteracy is the gateway to enriched learning experiences for students. To help educators foster great teaching and learning, we are proud to introduce the first comprehensive Spanish and English elementary biliteracy suite grounded in the Science of Reading.

The assessment and screening power of mCLASS® and mCLASS Lectura, the core instruction of Amplify Core Knowledge Language Arts (CKLA) and Amplify Caminos, and the personalized learning of Boost Reading and Boost Lectura come together in a complete system that fosters biliteracy, saves you time, and works within any instructional model.

Our authentic Spanish language arts resources are:

- Representative of how Spanish literacy is developed.
- Cohesively aligned with our English suite to support biliteracy.
- Designed to support every student within an aligned Multi-Tiered System of Supports (MTSS) framework.



# Comprehensive system in action

Amplify's biliteracy suite is an ecosystem of programs that support multilingual learners on their path toward biliteracy. As a connected system grounded in the Science of Reading, this cohesive suite cultivates students' literacy in both Spanish and English.

Data is used to **inform instructional needs**

All students placed into **personalized learning**



**Instruct**

TIER 1 2 3

**Amplify** Caminos

**Amplify** CKLA

with Language Studio

Personalized learning reinforces **core instruction**



**Practice**

TIER 1 2 3

**Boost** Lectura

**Boost** Reading

**Assess**

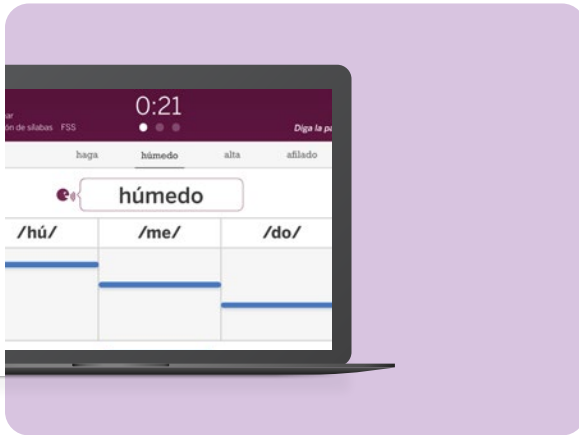
TIER 1 2 3

**mCLASS** Lectura

**mCLASS** DIBELS® 8th Edition



# System of multi-tiered biliteracy supports



## Universal and dyslexia screening mCLASS Lectura and mCLASS

mCLASS Lectura works in tandem with mCLASS DIBELS® 8th Edition to provide an equitable universal and dyslexia screening assessment. It's the only assessment to offer a dual language instructional report that shows how a student is reading in each language.



## Core instruction Amplify Caminos and Amplify CKLA

Like its English language arts partner, Amplify CKLA, Amplify Caminos provides explicit, systematic foundational Spanish skills instruction sequenced with deep knowledge-building content to foster comprehension. Together, the programs flexibly pair to support a variety of bilingual and dual language instructional models to meet your student's biliteracy needs.



## Personalized learning Boost Lectura and Boost Reading

Boost Lectura uses captivating storylines and an adaptive curriculum to engage students in powerful and personalized digital reading instruction. When Boost Reading and Boost Lectura are paired together, they build reading proficiency in both English and Spanish for grades K–2, creating the first truly digital biliteracy solution of its kind.

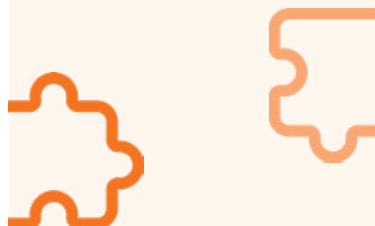
# Built on principles that honor biliteracy



Amplify's biliteracy suite is based on expert guidance and research into how bilingual literacy develops. Each of the following principles guides and serves as a foundation for our biliteracy suite:

1

Bilingualism is an asset and a cognitive strength.



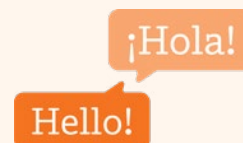
2

Literacy knowledge in a second language builds from the first language.



3

Foundational skills, vocabulary, and knowledge—important for reading comprehension—transfer to other languages through explicit instruction.



4

Oral language development is critical and must be an integral component of literacy instruction.



5

Universal screening in both the home language and the language of instruction with valid, reliable assessments is necessary.

6

Continuing to develop students' home language supports literacy development in the language of instruction.

7

Honoring the home language, culture, and community experiences of students supports positive long-term outcomes.

# Developed with a team of Spanish literacy experts and educators

Our Spanish suite of programs was developed with Spanish literacy experts and nationally recognized advisors, in collaboration with teachers, authors, artists, engineers, game designers, and researchers. Their insights and pedagogical expertise helped us build authentic programs that focus on the key accelerants of Spanish literacy.



**Elizabeth Jiménez Salinas**  
Bilingual Education Expert  
CEO, Gemas Consulting

Elizabeth Jiménez Salinas began her career as a bilingual elementary teacher, then later became an adjunct professor of education at California State University. Salinas also earned her MBA under Peter Drucker at the Claremont Graduate School while raising five children. In October of 2008 she was awarded the *homenaje a la mujer* for her contributions to the education of English learners by the Association of Mexican American Educators.



**Desiree Pallais-Downing, Ph.D.**  
Clinical Faculty,  
University of Texas at Austin

Desiree Pallais-Downing is a member of the clinical faculty at the University of Texas at Austin, where she teaches undergraduate and graduate students and serves as the coordinator of a bilingual pre-service teacher cohort. Her dissertation addressed the linguistic and pedagogical contributions of bilingual teacher candidates as part of creating and teaching with informational texts that incorporate the background knowledge and experiences of Latinos in the U.S.



**Lillian Durán, Ph.D.**  
Professor,  
University of Oregon

Lillian Durán has a Ph.D. in Educational Psychology from the University of Minnesota and is a Professor in the Department of Special Education and Clinical Sciences at the University of Oregon. She holds a B.A. in Elementary Education from Antioch College and a M.A. in Education and Human Development from the George Washington University. Her research is focused on improving instructional and assessment practices with multilingual children.



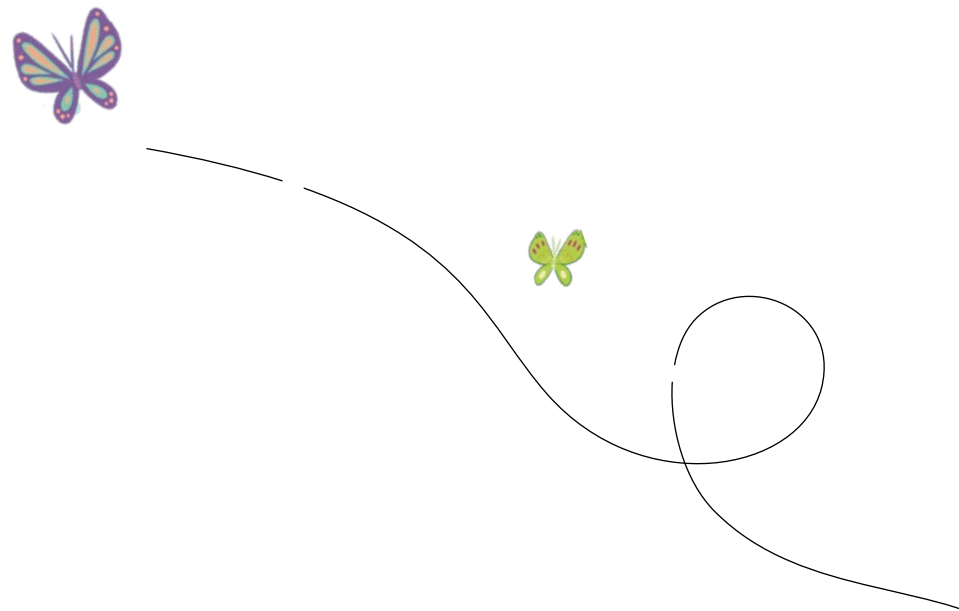
**Doris Luft Baker, Ph.D.**  
**Associate Professor,**  
**University of Texas at Austin**

Doris Luft Baker is an associate professor in the department of special education and the department of curriculum and instruction at the University of Texas at Austin. She is engaged in developing and evaluating instructional tools and assessments in English and Spanish that were designed to monitor and improve the academic performance of English learners with and without learning difficulties in reading, science, and social studies.



**Gisela O'Brien, Ph.D.**  
**Bilingual Education Expert and Faculty,**  
**Loyola Marymount University**

Gisela O'Brien's areas of expertise include curriculum development, assessment, and professional development focused on the needs of multilingual learners. She provides technical assistance to districts across California to implement effective bilingual and dual-immersion programs and teaches courses in reading, writing, and second language learning methods.





# mCLASS Lectura

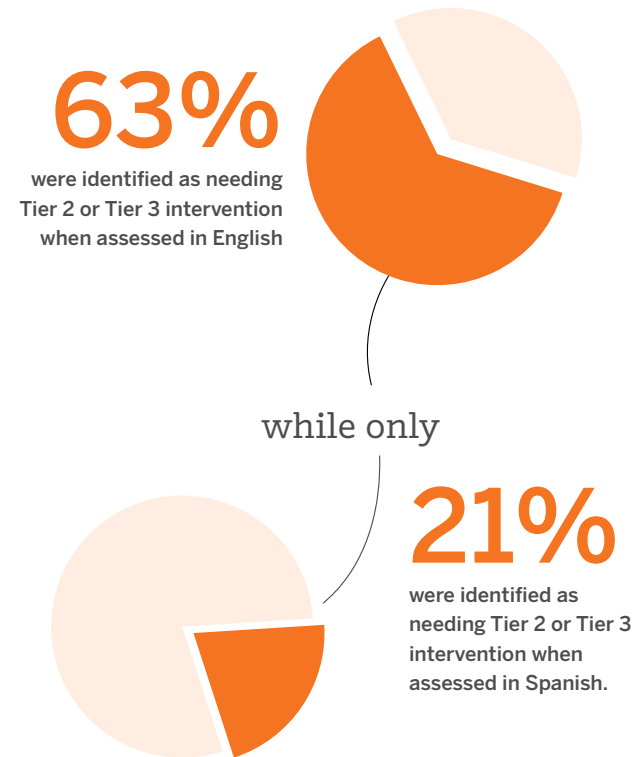
## Award-winning Spanish assessment built for bilingual students

A 2019 study from the University of Oregon found that 63% of Pre-K students whose home language was Spanish who were assessed in English were identified as needing Tier 2 or 3 intervention, while only 21% needed it when they were assessed in Spanish. Giving teachers the ability to accurately assess Spanish literacy skills is critical to getting the full picture of each child's abilities. mCLASS Lectura does just that and more.

mCLASS Lectura is a universal and dyslexia screener for K–6 that helps educators accelerate students' literacy in Spanish.

### What sets mCLASS Lectura apart?

- **Authentic and reliable one-minute measures:** mCLASS Lectura provides teacher-administered assessments that offer reliable and authentic measures of Spanish literacy skills.
- **Dual language reporting in Spanish and English:** mCLASS Lectura helps you understand the full scope of students' literacy proficiency, and reduce your risk of underestimating students' abilities.
- **Cross-linguistic transfer:** mCLASS Lectura fosters cross-linguistic transfer by providing educators with information on transferrable skills and guidance for using strengths from one language to build literacy in the second language.





# How mCLASS Lectura works within the Spanish literacy suite

## Core instruction Amplify Caminos

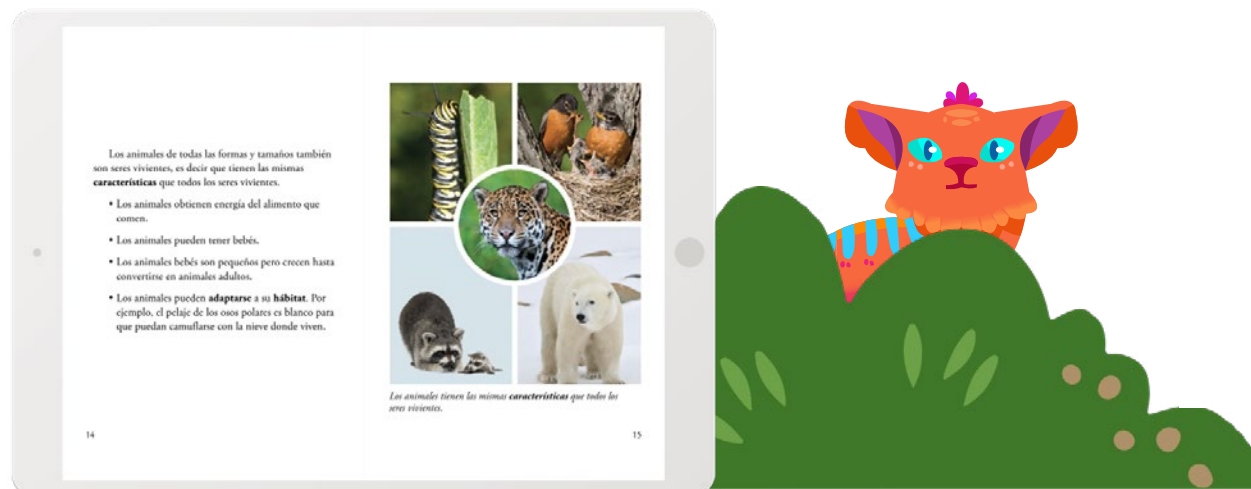
When combined with Amplify Caminos, mCLASS Lectura helps you provide targeted whole-class instruction specific to your class's or students' risk levels and areas of growth for Spanish literacy.

- Measure the same skills taught in Amplify Caminos with mCLASS Lectura, allowing educators to use their assessment data to drive targeted core instruction.
- Reinforce core instruction with mCLASS Lectura's small-group activities.

## Personalized learning Boost Lectura

mCLASS Lectura drives placement into Boost Lectura, our personalized learning program, placing students on a skill map that meets them at their instructional level.

- Boost Lectura adapts each student's personalized learning path based on mCLASS Lectura benchmark data.
- Teachers can track student progress in an integrated system with mCLASS Lectura and Boost Lectura, identifying classroom trends early on.



# How mCLASS Lectura works with mCLASS DIBELS 8th Edition

Combining mCLASS Lectura and mCLASS DIBELS 8th Edition helps you understand where your students are on both their English and Spanish literacy paths.

## Make confident connections between Spanish and English:

- mCLASS Lectura and mCLASS DIBELS 8th Edition offer an approach to universal and dyslexia screening in both languages.
- Developmentally appropriate measures allow all students to showcase their skill sets, even those with the lowest levels of incoming skills.
- When used together, educators can support cross-linguistic transfer by using student skill proficiencies in Spanish to make connections to English, and vice-versa.

## Assessment and instruction should reflect the differences between English and Spanish.

- High-quality assessment and instruction will account for the major differences between English and Spanish, not just provide a direct translation.



Scan the QR code to learn more about the research behind the importance of dual language assessment.

### English

44 phonemes

Phonemes represented orthographically by approximately 150 graphemes

One of the most opaque alphabetic languages

### Spanish

Between 22 and 24 phonemes

Almost a one-to-one match to phonemes and graphemes

One of the more transparent alphabetic languages

## Dual language reporting with mCLASS

Together, mCLASS DIBELS 8th Edition and mCLASS Lectura offer dual language reporting that provides educators with an asset-based view of a student's biliteracy story, all while enabling them to support cross-linguistic transfer opportunities.

**1** mCLASS shows educators students' areas of skill proficiency in each language, enabling them to help students build on those strengths and make connections to their second language.

**2** A comparison of student literacy growth in English and Spanish provides educators with a clear overview of how skills have developed overall.

**3** Educators can easily track biliteracy development while receiving practical guidance in supporting student growth.

**mCLASS®** Andi Brown HOME PRINT ADMIN HELP LOGOUT

District: **DUMBO** School: **Washington Elementary** Class / Group: **Andi Brown Spanish**

**Benchmark Progress Instruction Home Connect Dual Language**

Grade 1

**Name**  
Archuleta, Gabriel

**Gabriel Archuleta**

Gabriel demonstrates higher performance on Spanish literacy assessments than English literacy assessments. Gabriel applies strong foundational skills in Spanish to read and comprehend text. Gabriel may need additional support in English language, foundational skills, and in applying foundational skills to read and comprehend text.

Teach Gabriel to apply Spanish letter-sound knowledge to English; review letter-sound correspondences that are similar across both languages and point out those that are different in English.

	Letter Names	Phonological Awareness	Letter Sounds	Decoding	Word Reading	Reading Accuracy	Reading Fluency
English	30 Well Below	34 Below	11 Well Below	11 Well Below	10 Below	40% Well Below	4 Well Below
Spanish	51 Benchmark	53 Benchmark	20 Benchmark	55 Benchmark	23 Below	95% Benchmark	42 Below

**Overall Literacy Skill**  
English: **DEVELOPING** Spanish: **ON TRACK**

**Supporting Gabriel's Biliteracy Development**

**Phonological Awareness**  
Gabriel has strong skills in phonological awareness in Spanish at both the syllable and phoneme levels and needs to build skills in phonological awareness in English. During instruction, consider cross-language transfer or whether the sounds transfer between languages. Build on sounds that are similar across languages, and highlight sounds that are different. Start with earlier phonological awareness skills like blending and segmenting at the syllable and onset-rime levels before moving to phonemes.

For students with developing or emerging skills in English language, start instruction with sounds the student already knows. Then, focus on recognizing and distinguishing all of the sounds in English.

Cross-Linguistic Transfer: Phonological Awareness

**Letter Sounds and Decoding**  
Gabriel has strong skills in phonics in Spanish (letter sound correspondence and blending sounds into syllables) and needs to build letter sound and decoding skills in English. During instruction, consider cross-language transfer: sounds and letter combinations that are

**ENGLISH**  
34 Below  
Phonemic Segmentation  
Phoneme Segmentation  
Fluency PSF

**SPANISH**  
53 Benchmark  
Syllable Segmentation  
Fluidez En La Segmentación  
De Sílabas FSS

**SPANISH**  
20 Benchmark  
Phoneme Manipulation  
¿Que Queda? QQ

**ENGLISH**  
19 Below  
Vocabulary VOCAB

# Amplify Caminos

## A research-based core curriculum essential for Spanish literacy

Bring the Science of Reading to your Spanish literacy instruction. Amplify Caminos is a robust and authentic elementary Spanish language arts program for grades K–5 that is built from the ground up for Spanish language literacy development and aligned with the science of how children learn to read.

### What sets Amplify Caminos apart?

- **Instructional parity:** Amplify Caminos, like its English language partner Amplify Core Knowledge Language Arts (CKLA), provides explicit, systematic foundational Spanish skills instruction sequenced with deep knowledge-building content to foster comprehension.
- **Builds background knowledge:** A shared scope and sequence across science, social studies and literature allows teachers to flexibly provide parallel instruction in Spanish or English with Amplify Caminos and Amplify CKLA.
- **High-quality teacher materials:** Access the lessons and resources essential to delivering Spanish literacy instruction, including ready-to-use and customizable lesson slides and professional development tools.



# How Amplify Caminos works within the Spanish literacy suite

## Assessment

### mCLASS assessment

Amplify Caminos provides strong core instruction in the same critical literacy skills measured in mCLASS Lectura, helping align your assessment and core instruction.

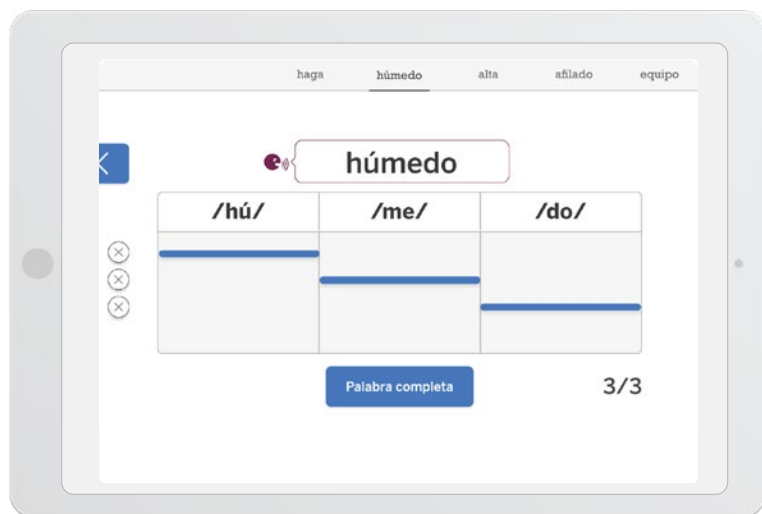
- mCLASS Lectura replaces beginning- and end-of-year skills benchmark assessments for Amplify Caminos in grades K–2, providing a wider view of the Spanish literacy skills students have mastered and where they need additional support.
- Amplify Caminos and mCLASS Lectura enable teachers to easily find instruction activities for their targeted groups, enhancing convenience and engaging students already familiar with instructional routines.

## Personalized Learning

### Boost Lectura

Boost Lectura extends and reinforces the skills learned from Amplify Caminos through personalized instruction and practice.

- Amplify Caminos and Boost Lectura are grounded in the same evidence-based Spanish literacy skills progression.
- Extend skills practice with Amplify Caminos and Boost Lectura's shared vocabulary list and knowledge topics providing consistent reinforcement throughout the year.



# How Amplify Caminos works with Amplify CKLA

Amplify Caminos and Amplify CKLA are built on the science behind how students in grades K–5 learn. Together, they offer a comprehensive biliteracy solution that develops foundational skills and content knowledge in Spanish and English, with tiered support for language development.

- Intentional knowledge building in literature, science, and social studies connects topics and spirals learning within and across grades.
- Metalinguistic awareness builds as students explore similarities and differences in each language while strengthening their knowledge across both.





## Dynamic decodable books in English and Spanish

An effective Spanish language arts curriculum goes beyond a mere translation. Amplify Caminos includes authentic texts written by Latin American and Spanish authors across diverse topics and genres.

**Amplify Caminos and Amplify CKLA are built on the conviction that equitable instruction is vital to effective teaching and learning**



Amplify CKLA and Amplify Caminos deliver high-quality Spanish and English decodable readers that maximize skill transfer by providing students opportunities to apply skills learned, fostering their growing reading competency. Spanish decodable readers are fully authentic and designed to reinforce the skills covered in lessons.



# Boost Lectura

## An adaptive Spanish literacy program, rooted in the Science of Reading

Boost Lectura is an authentic K–2 Spanish literacy program that focuses on the skills that research indicates are essential to Spanish literacy development. An essential component of the biliteracy suite, Boost Lectura uses an adaptive curriculum to engage students with personalized digital reading instruction that can be easily implemented in the classroom.

### What sets Boost Lectura apart?

- **Systematic instruction:** Boost Lectura develops foundational Spanish literacy skills, such as phonological awareness, decoding, and comprehension processes, which educators can use to support English literacy growth.
- **Actionable insights into students' skills:** The Teacher Dashboard includes side-by-side data insights for Boost Lectura and Boost Reading, and provides educators with a more accurate picture of students' reading ability in both languages.
- **Adaptive technology:** Students are placed into our Spanish literacy skill map that adapts to each reader to ensure their unique needs are reinforced across key skill areas.



# How Boost Lectura works within the Spanish literacy suite

## Core instruction Amplify Caminos

Boost Lectura expands on the learning experiences of Amplify Caminos, delivering personalized practice to support foundational skill development.

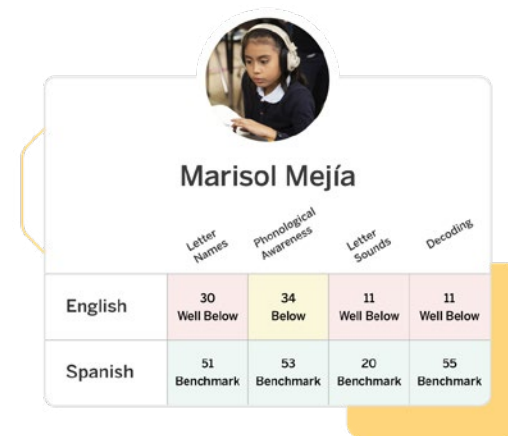
- Differentiated practice with Boost Lectura reinforces core instruction.
- Shared skills progression is supported through highly engaging storytelling elements.



## Assessment mCLASS Lectura

mCLASS Lectura assessment places students on their personalized path with Boost Lectura.

- Accelerate Spanish literacy skills by providing practice with the skills students need most.
- Access a closer look at student progress with mCLASS Lectura and Boost Lectura reporting, made specifically for educators to better support Spanish-speaking students in the classroom.

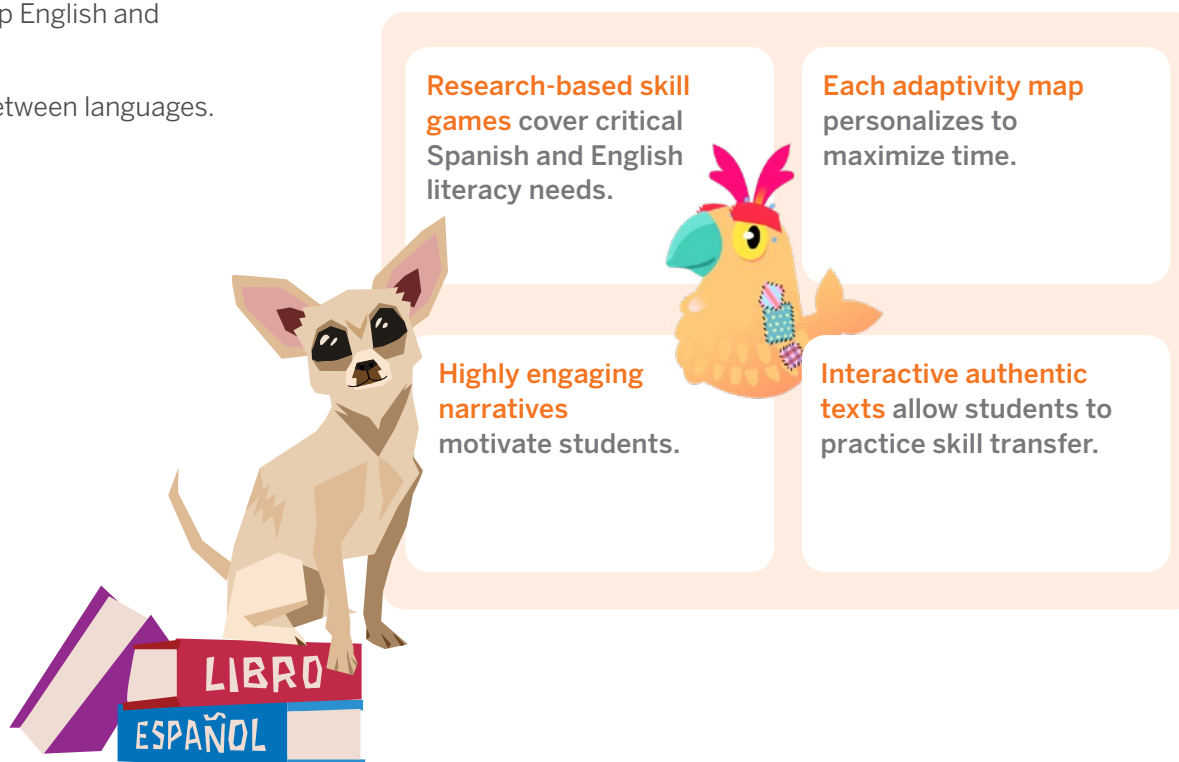


# How Boost Lectura works with Boost Reading

Boost Lectura and its English literacy counterpart, Boost Reading, accelerate the development of the literacy skills necessary for Spanish and English reading development for K–2 multilingual learners.

- Save time in the classroom with student-led practice that provides the right instruction at the right time to develop English and Spanish literacy.
- Support the transfer of critical literacy skills between languages.

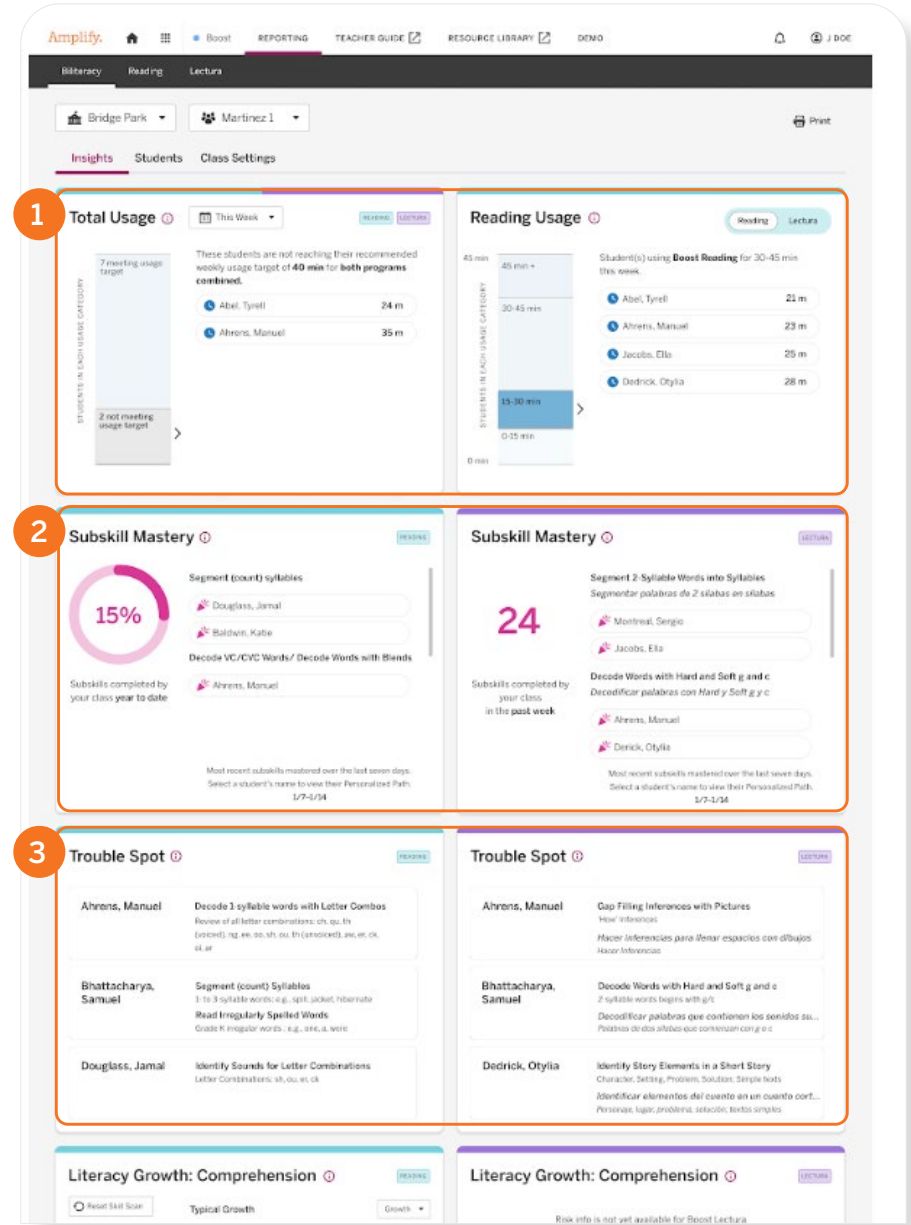
**Boost Lectura and Boost Reading deliver student engagement with the reliable data teachers need to advance literacy development.**



## Side-by-side reporting for English and Spanish

Data from both Boost Lectura and Boost Reading provide a more holistic picture of student reading ability and mastery. Explore side-by-side reporting offering actionable and insightful data, helping inform instruction, and extending teacher reach.

- 1 With side-by-side usage reporting in Boost Reading and Boost Lectura, you'll ensure students are meeting practice goals and support biliteracy.
- 2 Compare Spanish literacy strengths in Boost Lectura and use them to drive instruction in English (and vice versa).
- 3 Know exactly which students need additional support and which specific skills need attention.



# Meet your students' instructional needs in any classroom model

Amplify's biliteracy suite supports literacy development across all instructional tiers, no matter the classroom model.



## English-only model

In an English-only classroom model, educators serving Spanish-speaking students can uncover Spanish literacy strengths to help build English literacy.

### Assess

#### mCLASS Lectura and mCLASS DIBELS 8th Edition

Identify key Spanish literacy strengths that can transfer to English reading development with actionable data to drive instruction.

### Instruct

#### Amplify CKLA and Language Studio

Multilingual learner support is built into every Amplify CKLA lesson, with differentiated guidance across five proficiency levels.

With Language Studio, Amplify CKLA's English language development (ELD) companion, students receive daily 30-minute lessons that reinforce the core and address the specific needs of students learning English.

### Practice

#### Boost Lectura and Boost Reading

Boost Lectura can be used alongside Boost Reading for students practicing literacy skills in Spanish, without needing a Spanish-speaking teacher present.



## Transitional model

Educators in a transitional bilingual model can continue strengthening Spanish-speaking student's literacy skills while they develop English proficiency.

### mCLASS Lectura and mCLASS DIBELS 8th Edition

Measure students' Spanish and English literacy skills and gain practical student insights to support cross-linguistic transfer.

### Amplify Caminos and Amplify CKLA

Deliver aligned instruction in Spanish and English, helping students build a strong foundation for their transition to English instruction.

### Boost Lectura and Boost Reading

Boost Lectura can be used to secure Spanish literacy skills while building English proficiency with Boost Reading to help accelerate English literacy skills.



## Dual language model

Educators in a dual language model can use all of our programs to promote biliteracy and bilingualism in English and Spanish.

### mCLASS Lectura and mCLASS DIBELS 8th Edition

Measure students' literacy skills in both languages to support cross-linguistic transfer and overall biliteracy development.

### Amplify Caminos and Amplify CKLA

Build biliteracy with explicit, systematic foundational skills instruction sequenced with deep knowledge-building content in both languages.

### Boost Lectura and Boost Reading

Boost Lectura and Boost Reading's personalized instruction allows students to build literacy proficiency at their own pace in both Spanish and English.

# Your biliteracy journey doesn't end here

## Continue learning about biliteracy with Amplify!

**Check out the Science of Reading: The Podcast** to hear Susan Lambert and biliteracy experts discuss how the Science of Reading supports students in developing literacy in two languages.

**Explore our suite of resources:** There's so much more to discover about our assessment, core instruction, and personalized learning programs. Visit our website, [Amplify.com](https://www.amplify.com), to learn more about our biliteracy programs and how to integrate them into your classroom.

**Science of Reading professional development:** Expert training helps you implement the full biliteracy suite with confidence. Additionally, our complimentary webinars, events, podcasts, and communities help thousands of biliteracy educators make the shift to the Science of Reading.







**Elizabeth Jiménez Salinas**  
Bilingual Education Expert  
CEO, Gemas Consulting



**Season 1, Episode 23**

Improving dual language instruction with Elizabeth Jiménez Salinas



**Elsa Cárdenas Hagan, Ed.D.**  
President, Valley Speech Language and Learning Center, Brownsville, TX;  
Associate Research Professor, Texas Institute for Measurement and Statistics



**Season 4, Episode 8**

Empowering multilingual learners, with Elsa Cárdenas-Hagan, Ed.D.



**Lillian Durán**  
Professor, Department of Special Education and Clinical Sciences, University of Oregon



**Season 5, Episode 2**

Biliteracy and assessment, with Lillian Durán, Ph.D.



**Doris Luft Baker**  
Associate Professor,  
University of Texas at Austin



**Season 5, Episode 4**

What bilingualism can teach us with Doris Luft Baker, Ph.D.



**Desiree Pallais-Downing**  
Clinical Faculty,  
University of Texas at Austin



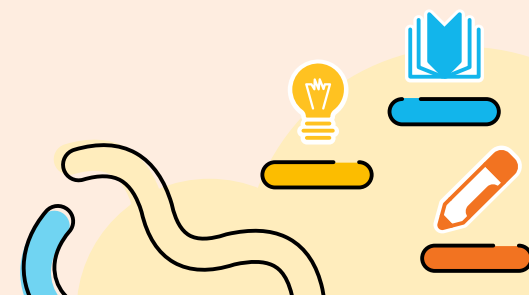
**Season 5, Episode 8**

Linguistic structure: English vs. Spanish, with Desirée Pallais-Downing, Ph.D.

Subscribe to  
**Science of Reading:  
The Podcast.**

New episodes released every  
other Wednesday!

[amplify.com/science-of-reading-the-podcast](https://amplify.com/science-of-reading-the-podcast)



To explore and sample our  
biliteracy suite programs, visit  
**[amplify.com/spanish-literacy-programs](https://amplify.com/spanish-literacy-programs)**.

Amplify.

© 2023 Amplify Education, Inc.  
All trademarks and copyrights are the property of Amplify or its licensors.