

# Professional Development Planning Guide

Professional development is the backbone of strong implementation, and Amplify welcomes the opportunity to partner with you to design a professional development plan that meets your needs. This planning guide will support you in selecting:

- just-right sessions for your teachers and leaders
- appropriate delivery methods and durations

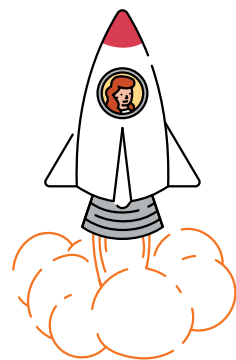


# Supporting success

Professional development will set your teachers and leaders up for success. Our interactive sessions will help you **launch, strengthen, and coach** teachers and leaders to implement the program with ease and provide students with an impactful experience.

## LAUNCH

Beginning of the year

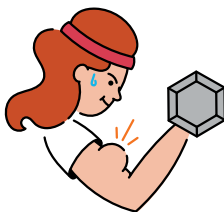


Propel into the new school year with sessions that introduce you to your Amplify program and support you in a strong implementation.

Before teaching

## STRENGTHEN

Mid-year, end of the year



Boost implementation with sessions that target specific instructional practices.

After 6+ weeks of teaching

## COACH

Mid-year, end of the year



Guide teachers and leaders with targeted learning tailored to their specific needs.

# Flexible delivery options

Amplify is prepared with session options that fit your time, budget, and preferences.



**Onsite support**  
In person, up to 30 participants



**Remote support**  
Live webinar, up to 30 participants



**Online course**  
Self-paced



HANDS-ON

INDEPENDENT

# Recommended sessions for teachers and leaders

Below you will find a recommended professional development plan for mCLASS® Intervention. Learn more about the goals for each session by visiting [mCLASS Intervention professional development](#).

Key



Recommended sessions



Recommended sessions for teachers



Recommended sessions for leaders

## LAUNCH

★ Intervention coordinators and interventionists:

New to mCLASS

4 half days  T L

2 full days  T L

Already implementing mCLASS

Full day  T L

## COACH

★ Coaching session

Full day  T L

Half day  T L

## Next steps

Ready to lock-in your dates? Want to learn more about developing a professional development plan to meet your needs? Contact your account executive to put this plan into action.

To learn more about Amplify's professional development services, visit [\*\*Amplify professional development.\*\*](#)

Amplify.