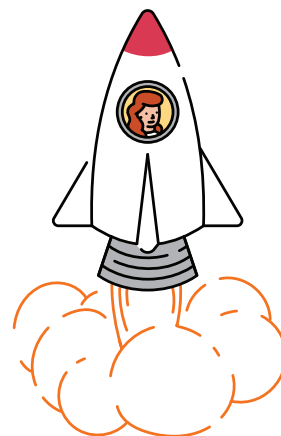


# About your PD package

Amplify's professional development packages support strong implementations through a set of sessions: Launch and Strengthen. These sessions can be delivered on-site or virtually and orient teachers to the full features of your mCLASS® Math program. To choose the package that is best for you, consider the outcomes, timing, and modality that you prefer for your sessions.



## About your Launch session

mCLASS sessions are intended for up to 30 teachers.

### On-site or virtual (3 hours)

#### Administration and scoring training for teachers

Learn how to administer and score your mCLASS assessment(s) and leave ready to collect data using standardized guidelines.

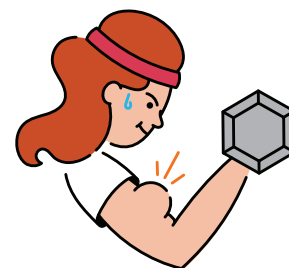
### On-site (6 hours) or virtual (two 3-hour sessions)

#### Administration and instruction essentials for teachers

Dive into the essentials of your mCLASS assessment program. Learn how to administer and score the assessment and leave ready to leverage mCLASS reports and lessons to accelerate data-driven student outcomes.

## About your Strengthen session

When you're ready to deepen instructional practices, you will choose from our curated on-site or virtual Strengthen sessions. While you should consider the length and modality that fit your school year, we know that the needs of your teachers may change. The session topic can therefore be chosen when you're ready to schedule. Assessment Strengthen sessions should be scheduled after the most recent benchmark window has closed for participants to work with their own data.



### On-site or virtual (3 hours)

#### Creating a data-driven classroom for teachers\*

Dive deep into mCLASS reports and instructional recommendations to drive stronger student outcomes in your classroom. You will leave ready to leverage mCLASS progress monitoring and grouping tools to support a robust MTSS program.

#### Building a data-driven culture for leaders\*

Cultivate a schoolwide culture of data-driven practices. Use mCLASS reports to drill into key school-level data and leave with a systems-level action plan to drive stronger student and teacher outcomes.

Visit [amplify.com/pd/assessment-intervention](https://amplify.com/pd/assessment-intervention) for more information.