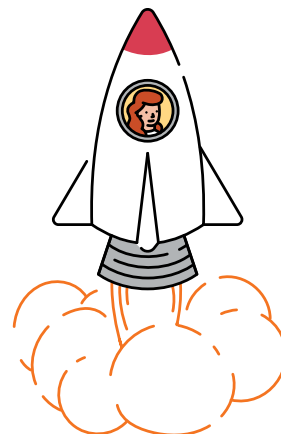


About your PD package

Our PD features high-quality session design that sets all teachers up for success with Amplify Texas programs—whether they’re years into using them or just starting out. We offer a range of unique packages for each phase of an implementation, with sessions strategically bundled for multiple touch points throughout the year. You can further customize your package by adding enhancement sessions such as Launch and Strengthen sessions for leaders, as well as biliteracy sessions to build capacity in teachers and leaders to meet the needs of all learners within Amplify Texas core programs.



About your Launch session

Amplify ELAR Texas sessions are intended for up to 30 participants, and are facilitated in grade-level bands (K–2 and 3–5) to provide the most personalized learning experiences. It’s important to note that Amplify ELAR Texas sessions for K–2 are knowledge- or skills-specific. We also offer a full-day biliteracy session that combines training for both the Amplify ELAR Texas and Amplify SLAR Texas curriculum. Propel your teachers into the new school year with these sessions introducing teachers and leaders to their Amplify program(s) to support a strong implementation.

On-site or virtual (3 hours)

Suggested enhancement: Program overview for leaders

Grades K–5

The program overview for leaders supports district- and school-level instructional leaders in effectively implementing the program. Leaders will learn the foundational elements of the program, build an understanding of the key teacher and student practices to look for in classrooms, and develop an implementation plan.

On-site (6 hours)

Initial training for teachers*

Grades K–2 (skills, knowledge, or both) or 3–5

Initial training sessions are designed for educators who are new to our program. In our initial training session, educators are oriented to the key components of the program (including learning how to navigate, teach, and monitor student progress) while exploring content and program resources. Participants will leave the session with the foundational knowledge and skills necessary to begin teaching with the program.

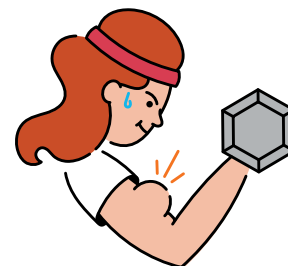


**Ask us about the NEW program-agnostic
Science of Reading sessions!**

*When using both Amplify ELAR and SLAR, this session should be substituted for the **biliteracy session** facilitated in both English and Spanish.

About your Strengthen session

When you're ready to deepen instructional practices, you will choose from one of our curated on-site or virtual Strengthen sessions. While you should consider the length and modality that fits your school year, we know that the needs of your teachers may change. Your session topic can therefore be chosen when you're ready to schedule.



On-site or virtual (3 hours)

Enhancing planning for teachers*

Grade bands K–2 or 3–5

Deepen your understanding of your next ELAR unit by engaging in a step-by-step unit and lesson planning protocol. Leave prepared to implement your next unit with both a completed unit plan and internalized lessons.

Enhancing practice for teachers*

Grade bands K–2 or 3–5

Practice implementing key lesson routines to strengthen your Amplify ELAR instruction. Leave with guidelines for routines you can implement in your classroom tomorrow.

Enhancing observations for leaders

Sharpen your program knowledge to support educators with effective Amplify ELAR implementation. Observe an ELAR lesson in action and practice providing high-leverage feedback. Walk away prepared to provide educators with actionable feedback during your next classroom observation.

Writing for teachers (Year 2+)

Grade bands K–2 or 3–5

Deepen your understanding of how to support students as they build writing skills in Amplify ELAR. Leave this session prepared to teach an upcoming writing lesson based on your student work analysis. Bring samples of your students' writing responses from Amplify ELAR to this session.

Virtual (1 hour)

Supporting all learners for teachers

Dig into embedded supports offered in the Amplify ELAR curriculum and prepare to support all learners in your next lesson.

Pacing for teachers

Learn five specific strategies to support pacing in your next Amplify ELAR lesson.

Student engagement for teachers

Explore engagement strategies that cultivate a student-centered classroom. Leave with a plan to incorporate these strategies in an upcoming lesson.