

Amplify.

Amplify's biliteracy suite

To align with our mission of creating learning experiences that are rigorous and riveting for all students, we're proud to introduce the first comprehensive Spanish and English elementary biliteracy suite grounded in the **Science of Reading**. The assessment and screening power of **mCLASS® DIBELS® 8th Edition** and **mCLASS Lectura**, the core instruction of **Amplify Core Knowledge Language Arts® (CKLA)** and **Amplify Caminos**, and the personalized learning of **Boost Reading** and **Boost Lectura** come together in a complete system that promotes biliteracy, saves you time, and works within any instructional model.

To support a strong and effective implementation of our biliteracy programs, we're excited to present professional development sessions for teachers and leaders in both English and Spanish. We've outlined session recommendations for those using both Amplify CKLA and Amplify Caminos core programs and/or mCLASS DIBELS 8th Edition and mCLASS Lectura assessment programs.

Facilitated in both English and Spanish, these specialized sessions should be scheduled for biliteracy teachers using both curricula and/or assessments. Purchase a complete biliteracy PD package, substitute a biliteracy session for the six-hour initial training in your package, or add these sessions on to your package for your biliteracy teachers.



Amplify.

Amplify's biliteracy suite

Comprehensive biliteracy system in action

Amplify's biliteracy suite is an ecosystem of programs that support multilingual learners on their path toward biliteracy. As a connected system grounded in the Science of Reading, this cohesive suite cultivates students' literacy in both Spanish and English.

Assess

TIER 1 2 3

mCLASS Lectura

mCLASS DIBELS® 8th Edition



Data is used to **inform instructional needs**

All students placed into **personalized learning**

Instruct

TIER 1 2 3

Amplify Caminos

Amplify CKLA

Language Studio



Practice

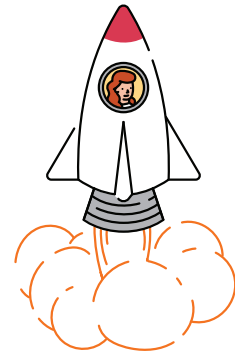
TIER 1 2 3

Boost Lectura

Boost Reading



Personalized learning reinforces **core instruction**



About your Launch session

All sessions are intended for up to 30 teachers and available as on-site or virtual overviews introducing teachers and leaders to their Amplify program(s) and supporting a strong implementation. Session-specific agendas and objectives can be accessed at amplify.com/pdprep.

Amplify CKLA and Amplify Caminos ***On-site or virtual (6 hours)***

Amplify CKLA + Caminos initial training

Biliteracy initial training sessions are designed for educators who are new users to Amplify CKLA and Amplify Caminos. In our session, educators are oriented to the key components of each program (including learning how to navigate, teach, and monitor student progress) while exploring content, program resources, and the connections between the two curricula. Participants will leave the session with foundational knowledge and skills necessary to begin implementing both curricula in their particular biliteracy model. Available for individual teachers, grade-level teams, PLCs, and instructional leaders.

mCLASS DIBELS 8th Edition and Lectura ***On-site or virtual (6 hours)***

Administration and instruction essentials for teachers

Dive into the essentials of mCLASS DIBELS 8th Edition and Lectura. Learn how to administer and score the assessments and leave ready to leverage mCLASS reports and lessons to accelerate data-driven student outcomes.

mCLASS DIBELS 8th Edition and Lectura ***On-site or virtual (3 hours)***

Administration and reporting training for leaders

Prepare to implement mCLASS with your school or district. Determine systems-level actions that will ensure assessment fidelity and leave ready to leverage key admin reports to support data-informed decision making.

Boost Reading and Boost Lectura ***On-site or virtual (2 hours)***

Getting started for teachers

Learn the essentials of Boost Reading and Boost Lectura, including program structure and navigation, and leave ready to implement both programs.

Boost Reading and Boost Lectura ***Virtual (Self-paced)***

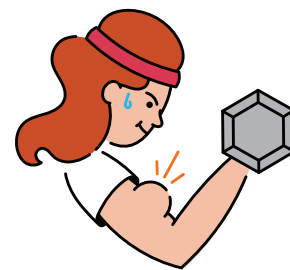
Getting started for teachers

Learn the essentials of Boost Reading and Boost Lectura, including program structure and navigation, and prepare to implement both programs through this on-demand course. This subscription includes an individual seat to the course, which takes approximately two hours to complete. Participants will be able to access and revisit the course as needed for up to one year.

Visit amplify.com/pd/assessment-intervention for more information.

About your Strength session

When you're ready to deepen teachers' practices, you will choose from one of our curated on-site or virtual Strengthen sessions. While you should consider the length and modality that fits your school year, we know that the needs of your teachers may change. The session topic can therefore be chosen when you're ready to schedule.



Amplify CKLA and Amplify Caminos **On-site or virtual (3 hours)**

Amplify CKLA and Caminos **enhancing planning for teachers**

Grade bands PreK, K–2, or 3–5

Deepen your understanding of your next CKLA and Caminos unit by engaging in a step-by-step unit- and lesson-planning protocol. Leave prepared to implement your next CKLA and Caminos unit with a completed unit plan and internalized lessons for your particular biliteracy model.

Amplify CKLA and Caminos Knowledge enhancing **practice for teachers**

Grade bands K–2 or 3–5

Practice implementing key lesson routines to strengthen your Amplify CKLA and Caminos instruction. Leave with guidelines for routines you can implement in your biliteracy classroom tomorrow.

Practice: Amplify CKLA + Caminos Writing

Grade bands K–2 or 3–5

Deepen your understanding of how to support students as they build writing skills in, and across, Amplify CKLA and Caminos. Leave this session prepared to teach an upcoming writing lesson in Amplify CKLA and/or Caminos based on your student work analysis. Bring samples of your students' writing responses from Amplify CKLA and Caminos to this session.

mCLASS DIBELS 8th Edition and **mCLASS Lectura On-site or virtual (3 hours)**

Creating a data-driven classroom for teachers

Dive deep into mCLASS reports and instructional recommendations to drive stronger student outcomes in your classroom. You will leave ready to leverage mCLASS progress monitoring and grouping tools to support a robust MTSS program.

Building a data-driven culture for leaders

Cultivate a school-wide culture of data-driven practices. Use mCLASS reports to drill into key school-level data and leave with a systems-level action plan to drive stronger student and teacher outcomes.

Strengthen Focus: Assessing with fidelity **for teachers**

Fortify your mCLASS assessment administration with trainer-led practice targeted to your unique needs.

Strengthen Focus: Reporting and instruction **basics for teachers**

Learn how to use mCLASS classroom reporting, instructional tools, and resources to accelerate data-driven student outcomes.

Strengthen Focus: Progress monitoring **for teachers**

Implement mCLASS progress monitoring and MTSS best practices to track student progress and accelerate growth.

Strengthen Focus: Reporting basics for leaders

Examine your school-level mCLASS benchmark assessment data to identify key levers for improving student outcomes.

Virtual (1 hour)

Strengthen Focus: Goal setting and growth **outcomes for teachers**

Learn how to use mCLASS Goal Setting and Growth Outcomes reports to set meaningful, ambitious, and attainable goals that drive student progress and growth.