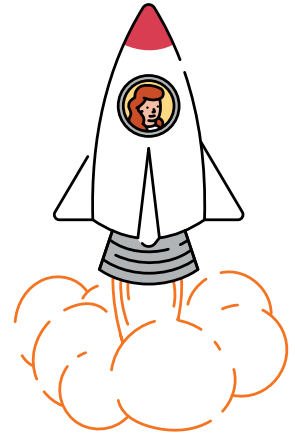


About your PD package

Amplify's professional development packages support strong implementations through a set of three sessions: Launch, Strengthen, and Coach. These sessions can be delivered on-site or virtually and orient teachers to the full features of your Amplify program. To choose the package that is best for you, consider the outcomes, timing, and modality that you prefer for your Launch session.



About your Launch session

Amplify ELA sessions are intended for up to 30 participants. Session-specific agendas and objectives can be accessed at amplify.com/pdprep.

On-site or virtual (3 hours)

Program overview for teachers

Program Overview sessions provide a basic introduction for teachers who are new users of the program. In a program overview session, teachers learn how to get started with the key features and materials of the program.

Program overview for leaders

The Program overview for leaders supports district and school-level instructional leaders in effectively implementing the program. Leaders will learn the foundational elements of the program, build an understanding of the key teacher and student practices to look for in classrooms, and develop an implementation plan.

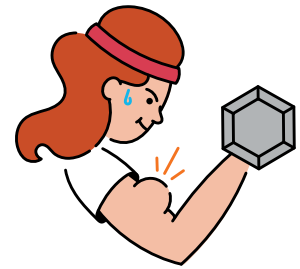
On-site (6 hours)

Initial training for teachers

Initial training sessions are designed for teachers who are new users. In our initial training session, teachers are oriented to the key components of the program (including learning how to navigate, teach, and monitor student progress) while exploring content and program resources. Teachers will leave the session with foundational knowledge and have ample opportunities to practice and begin planning in order to be prepared to teach the program.

About your Strengthen session

When you're ready to deepen instructional practices, you will choose from one of our curated on-site or virtual Strengthen sessions. While you should consider the length and modality that fits your school year, we know that the needs of your teachers may change. The session topic can therefore be chosen when you're ready to schedule.



On-site or virtual (3 hours)

Enhancing planning for teachers

Deepen your program knowledge by unpacking learning outcomes, key assessment moments, and student engagement opportunities from an Amplify ELA unit. Use backward planning to create a detailed plan for a unit of your choice and leave ready to begin the unit with your students.

Enhancing practice for teachers

Experience a close reading lesson to increase your understanding of how close reading is taught in Amplify ELA. Uncover which teacher moves will support students in tackling complex texts. Leave with a strong understanding of how to facilitate a close reading lesson that encourages student collaboration, drives analysis, and deepens understanding.

Enhancing observations for leaders

Elevate your program knowledge to support colleagues with effective Amplify ELA implementation. Leave prepared to identify key instructional elements in an Amplify ELA lesson, analyze data, and conduct effective classroom observations.

Writing: Improving through feedback (Practice)

Deepen your understanding of how to support students as they build writing skills in Amplify ELA. Leave this session

prepared to provide targeted feedback that supports student growth in writing. Bring samples of your students' writing responses from Amplify ELA to this session.

Supporting all learners (Practice)

Learn how to effectively use embedded differentiated supports in Amplify ELA and Classwork to support all students—including multilingual/English learners, students with learning disabilities, struggling readers and writers, and advanced students. Leave with a plan for supporting specific students within your classroom.

Data-informed instruction (Practice)

Analyze your own student data and learn to turn Amplify ELA data into differentiated and targeted instruction. Leave this session ready to use the data provided in Reporting and Classwork to align embedded support to your specific student needs.

This session is designed for educators using the digital curriculum and requires them to analyze student data from Amplify's Reporting app. Please ensure you have 4–6 weeks of student data in the Reporting app for this session. Please note that this session is not available for print-only users.

Virtual (1 hour)

Strengthen focus: Teaching with print and digital

Learn how to administer Amplify ELA lessons in your classroom using a hybrid approach of both digital and print curricula together.

Strengthen focus: Lesson planning

Deepen your understanding of the lessons in your next Amplify ELA unit by engaging in a step-by-step lesson-planning protocol.

Strengthen focus: Pacing

Learn how to identify and use essential activities, timing guidance, and knowledge of your students' strengths and needs to determine pacing for individual activities and lessons within Amplify ELA.

Strengthen focus: Grading and assessment (Practice)

Learn how to use key formative and summative assessments within Amplify ELA to develop a plan for grading based on the specific requirements of your school or district.

Increasing student engagement (Practice)

Identify features within Amplify ELA that increase student engagement, and determine ways to incorporate additional engagement strategies into lessons.

Visit amplify.com/pd/core for more information.