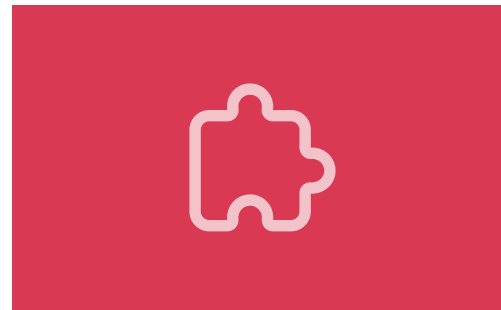
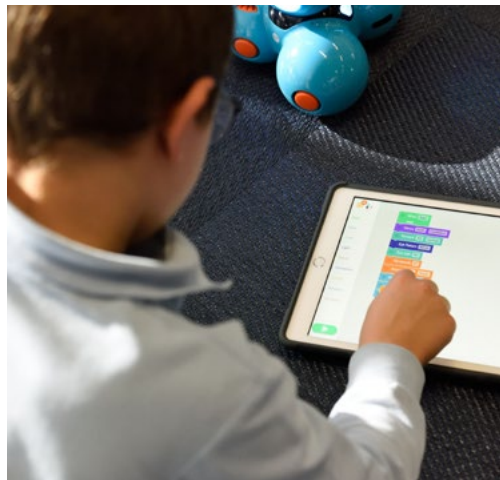
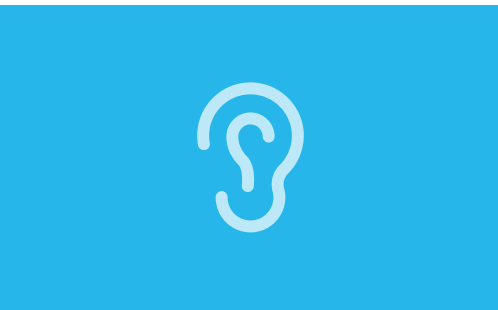
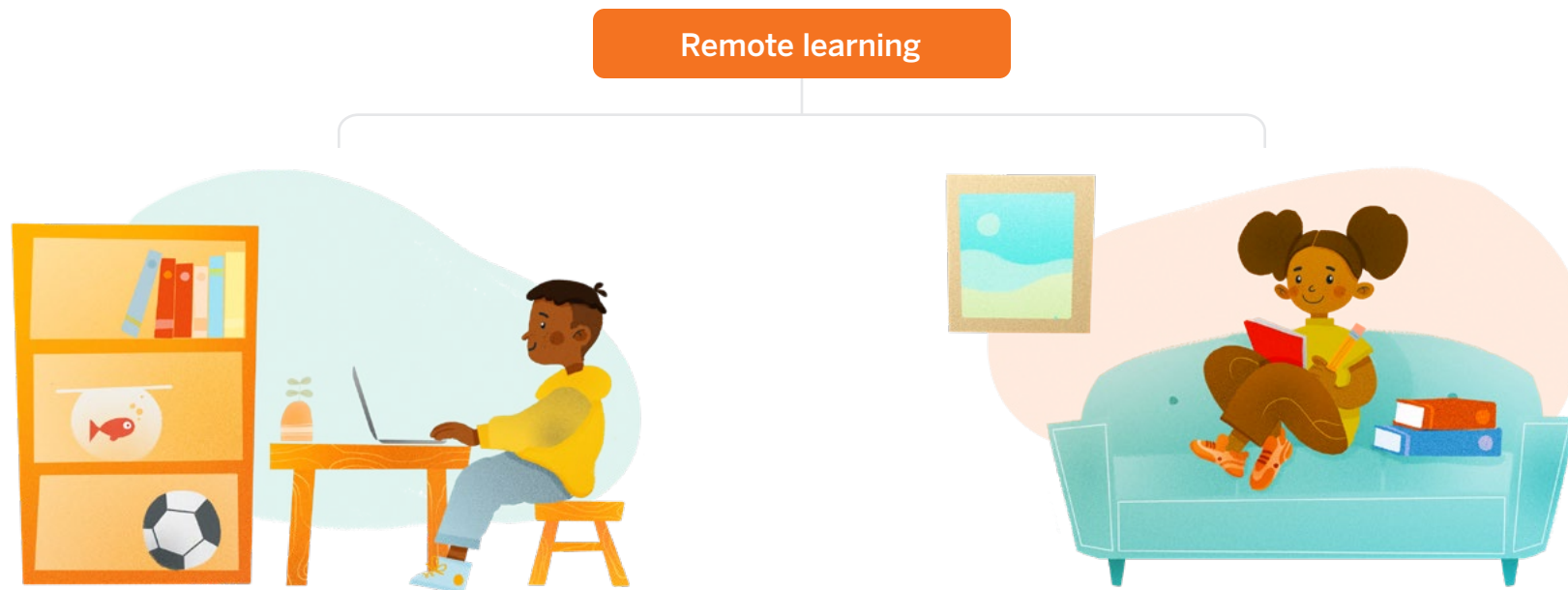


# Remote and hybrid assessment and learning guide



Whether your school is engaged in in-person, hybrid, or remote instruction, we know how important it is for teachers and administrators to understand every student's literacy and math development. mCLASS® has created a collection of resources to help you plan for a variety of scenarios for the 2020–2021 school year. We've got you covered—no matter what you're anticipating for back to school.



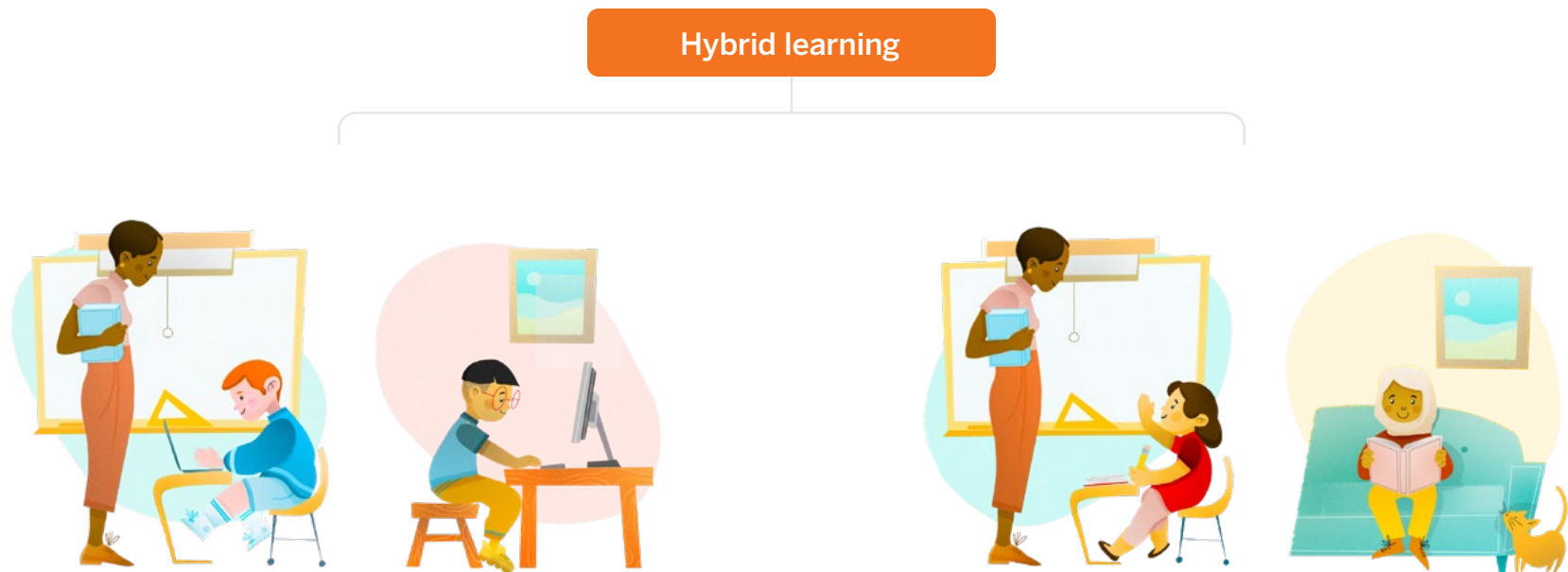
### ONLINE

Students learn at home **and** have access to some level of technology

### OFFLINE

Students learn at home **and do not** have access to technology other than potentially smartphones

**Examples** • Continuation of spring 2020 remote learning



**IN-PERSON/ONLINE**

Students spend some time in school and some at home **and** have access to technology

**IN-PERSON/OFFLINE**

Students spend some time in school and some at home **and do not** have access to technology

- Examples**
- A/B schedules where smaller groups of students are allowed on campuses
  - Staggered starts
  - Schools are opened for a period of time, then closed for a period of time

# Resources to support the use of mCLASS during extended remote learning

Planning to assess remotely? No problem. Our guides will help you feel comfortable and confident assessing remotely with all of our mCLASS literacy and math assessments, while mCLASS's free online measures, at-home learning packets, and family resources ensure you have effective, easy-to-use tools to support students during remote learning.

## Remote assessment guidance

The remote assessment guides provide recommendations and best practices for assessing one-on-one remotely with mCLASS. They cover when to assess, how to assess using a video meeting or call, how to interpret scores this back-to-school season, and how to take the next instructional steps.



## Professional development videos

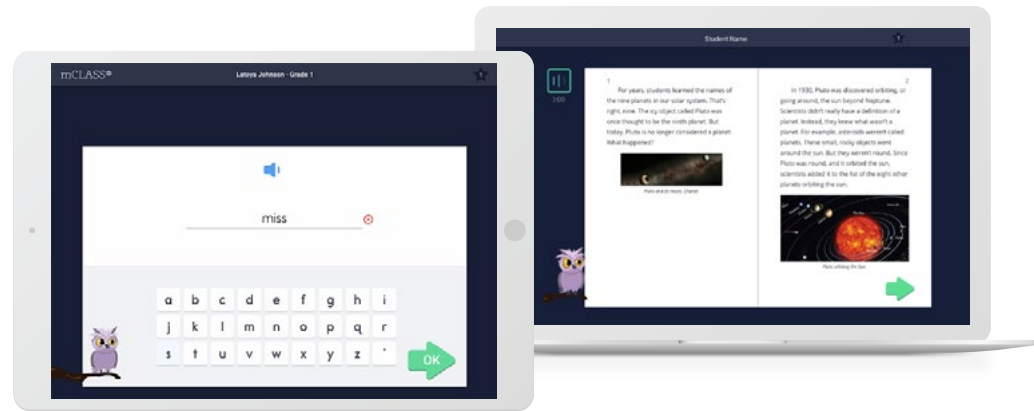
The mCLASS Training Site on mCLASS Home will include best practices and professional development videos on remote assessment and using data for remote instruction.



## RESOURCES TO SUPPORT THE USE OF mCLASS DURING EXTENDED REMOTE LEARNING

### Online measures

mCLASS's validated online measures are available free of charge to all mCLASS customers. This includes an online reading and comprehension measure, an online decoding measure, mCLASS Vocabulary, and mCLASS Spelling.



### Text Reading Online

With Text Reading Online, students in grades 1–6 will be able to read two texts and answer eight text-dependent comprehension questions from each text, as well as provide responses to text-dependent written comprehension prompts.

Assessment output will inform:

- Proficiency status on a grade-level text.
- Information on type of comprehension task (main idea, making inference, etc.).
- WCPM fluency score.
- Word analysis on the types of words read incorrectly.
- Writing score on content and syntax.

### Decoding Online

With our Decoding Online measure, students in grades 1–6 review multiple choices to select the word that matches the spoken word.

### mCLASS Vocabulary

In mCLASS Vocabulary, K–3 students demonstrate their knowledge of grade-specific words and their skill at deriving meaning from text. The assessment covers words that are high utility (tier 2) and content specific (tier 3). Depending on grade level, the student may be asked questions about the word, asked to use the word correctly to fill in a blank, or asked to match the word with its definition.

### mCLASS Spelling

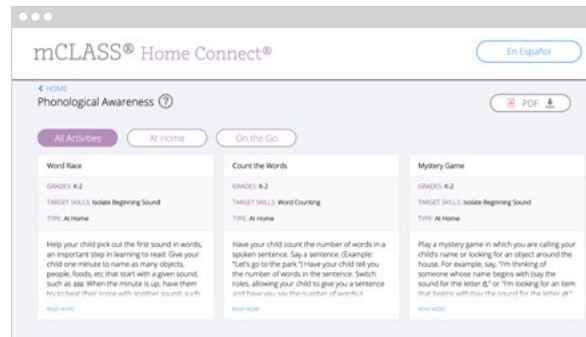
Finally, with mCLASS Spelling, K–3 students hear a target word selected from a selection of grade-specific words and use letter tiles to spell the word. These words include the phoneme-grapheme correspondences that students at each grade level are expected to learn over the course of a year based on the scopes and sequences of published reading and spelling curricula.

## RESOURCES TO SUPPORT THE USE OF mCLASS DURING EXTENDED REMOTE LEARNING



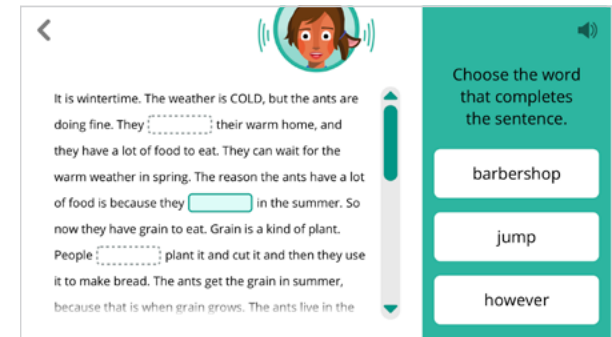
### At-home packets for summer and beyond

mCLASS Instruction will be aligned to each student, regardless of whether they are ahead of or behind their classmates. For schools using DIBELS® 8th edition, teachers are able to use mCLASS Instruction (based on the latest data available) to download the packet for each child. These activities can be used for at-home learning this summer or during periods of extended remote learning.



### Family resources

The mCLASS Home Connect website houses resources for parents and caregivers, including at-home lessons organized by skill to help students at home during remote learning. Our mCLASS parent/caregiver letters in English and Spanish ensure that families know how to best support their child.



### Personalized learning with Amplify Reading

Amplify Reading, our supplemental reading program, leverages your mCLASS data to provide remediation and enrichment. Students can use Amplify Reading on their own at home for engaging instruction and practice in phonological awareness, phonics, vocabulary, comprehension processes, and close reading. [\*\*Find more information on Amplify Reading here.\*\*](#)

### “What resources should I use for extended remote learning if my students have limited technology access?”

We understand that access to technology is a significant barrier for many of our students. If students have limited or no access to technology during extended periods of remote learning, the mCLASS guides provide alternatives for conducting benchmark assessments, such as assessing by phone. Additionally, at-home learning packets can be printed and sent home for students to continue working on skills.

# Resources to support the use of mCLASS in hybrid learning environments

We know that back to school will look different for every district. You may be considering staggered schedules or alternating between remote and in-person days. mCLASS’s resources for hybrid learning ensure that students continue to develop critical foundational skills both in the classroom and at home.

Below you'll find recommendations on how to best utilize mCLASS resources in hybrid learning environments.

In-person days	Remote days
Teacher-administered assessments	Remote teacher-administered assessments or student-led online measures
Small-group and individual teacher-led lessons with mCLASS instruction	At-home packets for independent practice
Progress-monitoring assessments	Home Connect resources with family activities
Amplify Reading	Amplify Reading

## “What resources should I use on remote days if my students have limited technology access?”

If students have limited or no access to technology during remote learning days, at home-packets and Home Connect resources can be printed in advance and sent home for students to complete during remote learning days.

For more information on mCLASS,  
visit **[amplify.com/mclass](https://amplify.com/mclass)**.

Amplify.

© 2020 Amplify Education, Inc. All trademarks and copyrights are the property of Amplify or its licensors.

